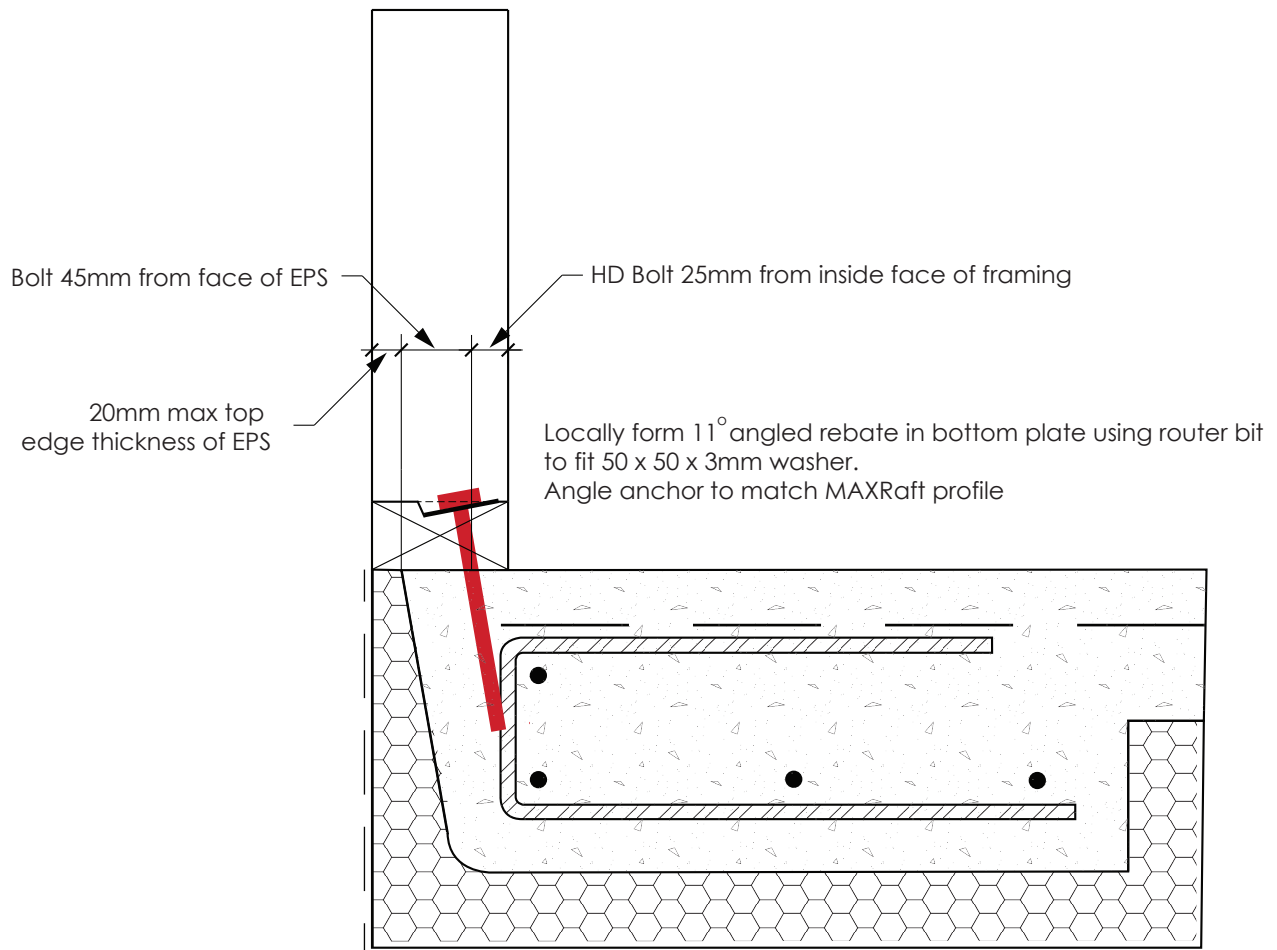


MAXRaft hold down bolt detail with 90mm framing
1:5

Perimeter wall bottom plate fixings and bracing hold down options:

- M12 cast-in bolts with 50 x 50 x 3mm sq washers as per clause 6.11.9 of NZS3604
- Simpson Strong-Tie TITEN HD **THD10160MG** screw anchors at 600mm centres
- Simpson Strong-Tie **AT-HP BLUE** anchoring adhesive with M12 5.8 grade stud, 100mm embedment at 600mm crs



Note - for 15mm EPS edge thicknesses the bolt angle will need to increase to 13°